

## Data Sheet

# Constant Pressure Module

## PVB

The PVB constant pressure module is a new addition to the proven PVG 32 valve family.

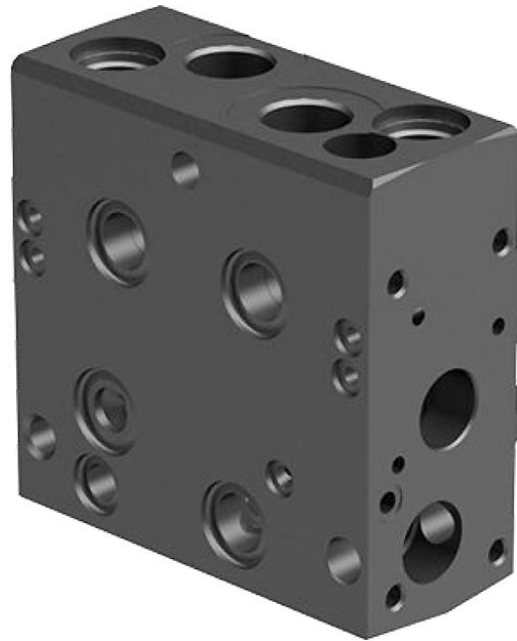
The PVB is a basic module with up to 130 l/min work port flow and a work port pressure rating of 350 bar. The PVB is designed for integration with PVL P shock- or anti-cavitation valves.

The constant pressure module is the first of its kind providing an integrated sectional valve solution with the ability to apply constant work port pressure.

Special patented compensator feeds or relieves work port flow to tank depending on work port load situation.

The PVB module can be applied in variety of applications where control of constant work port pressure is needed. These applications include:

- Trencher and Mounders (Forestry)
- Harvesting Heads (Forestry)
- Snow groomer
- Soil preparation compactors (Agriculture)

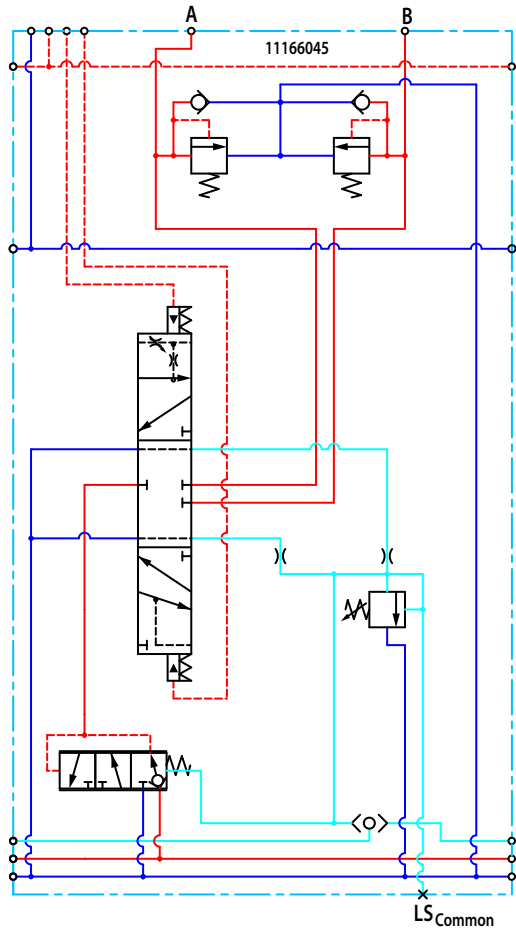


### Features

- Enables simple integrated function to maintain constant work port pressure
- Can be combined with any PVG 16/PVG 32 T0 valve configuration
- Proportional maximum pressure setting determined by PC spool
- Integrated Load Sense relief to set maximum port pressure (Common LS<sub>AB</sub>)
- Maximum pressure A/B port 400 bar
- Dedicated Pressure Control (PC) spools to match application requirements
- PC spool position proportionally controls work port pressure
- PC spool characteristics to match application (flow and pressure demand)
- Special patented compensator feeds/relieves work port flow

Comprehensive technical literature is online at [www.danfoss.com](http://www.danfoss.com)

## Constant pressure module PVB



## Ordering information

Part number	A/B-port	LSa-port	T0
11166045	G1/2 BSP	G1/4 BSP	Yes
11186267	7/8-14 UNF	1/2-20 UNF	Yes
11216266	G1/2 BSP	G1/4 BSP	-
11216270	7/8-14 UNF	1/2-20 UNF	-

Part number	Actuation	PVB with shuttle valve	Flow - l/min[US gal/min]			
			A->T	P->A	P->B	B->T
11200910			5	5	5	5
11200891			25	25	25	25
11190544			65	65	65	65

